

# 症例1

# 症例

**症例** 70歳代女性

**主訴** 倦怠感、食欲低下

**現病歴** 吐血で前医受診。GFにて胃体下部小弯に潰瘍・露出血管を認め止血。来院時採血で白血球増多、末梢血液像で幼若細胞の増加を認め、精査加療目的で当院紹介。

**既往歴** なし

**来院時現症** 体温36.9℃、脈拍79/分、血圧123/79mmHg  
意識清明、眼瞼結膜貧血なし、頸部リンパ節腫大なし

# 来院時検査所見

## 血液検査

WBC	58.2	$\times 10^3/\mu\text{L}$
RBC	3.42	$\times 10^6/\mu\text{L}$
Hb	10.0	g/dL
HCT	29.9	%
MCV	87.4	fL
PLT	18.0	$\times 10^3/\mu\text{L}$

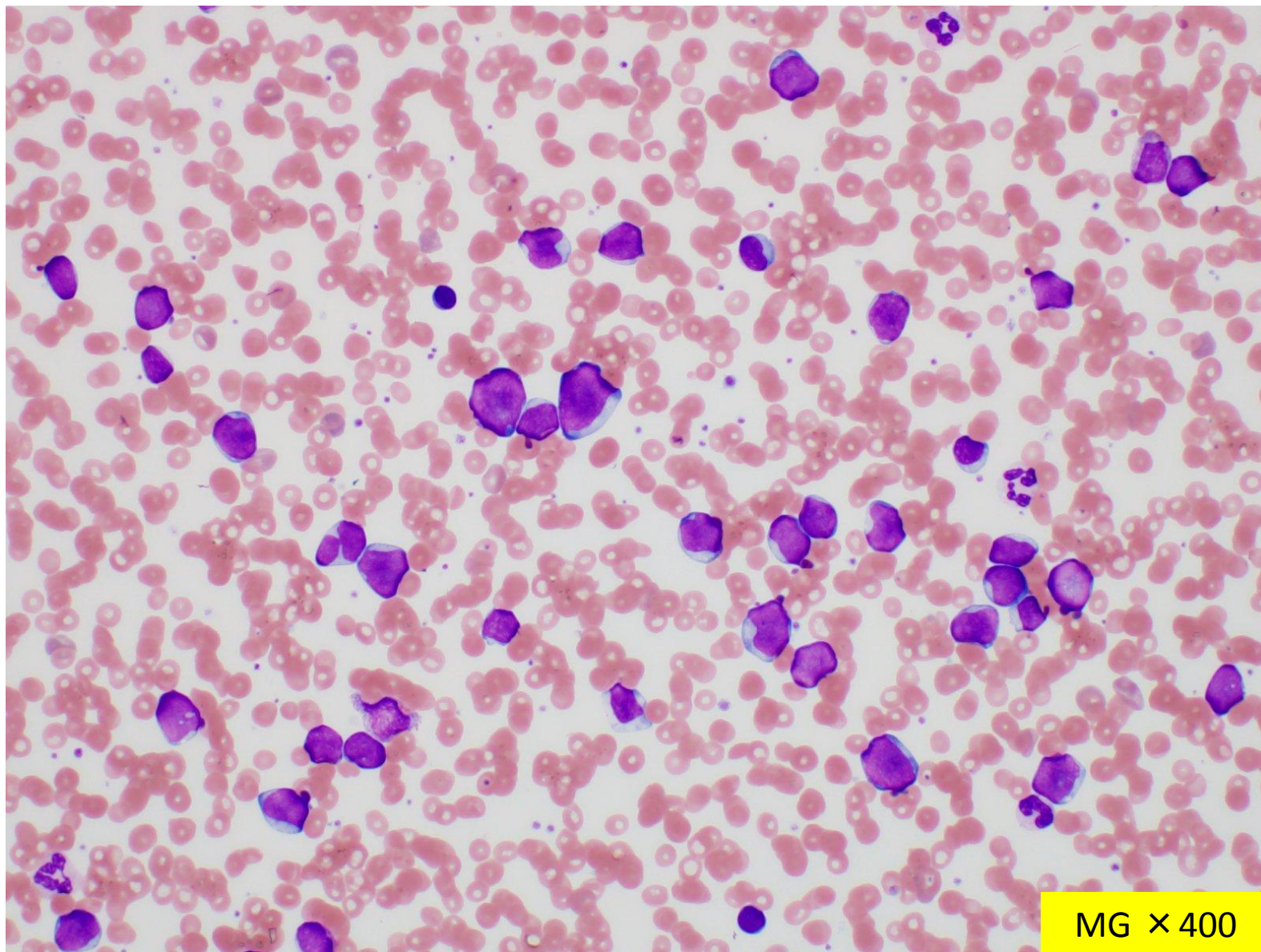
## 機械分類

Neutro	32.2	%
Lymph	27.5	%
Mono	39.3	%
Eosin	0.7	%
Baso	0.3	%

## 生化学・免疫検査

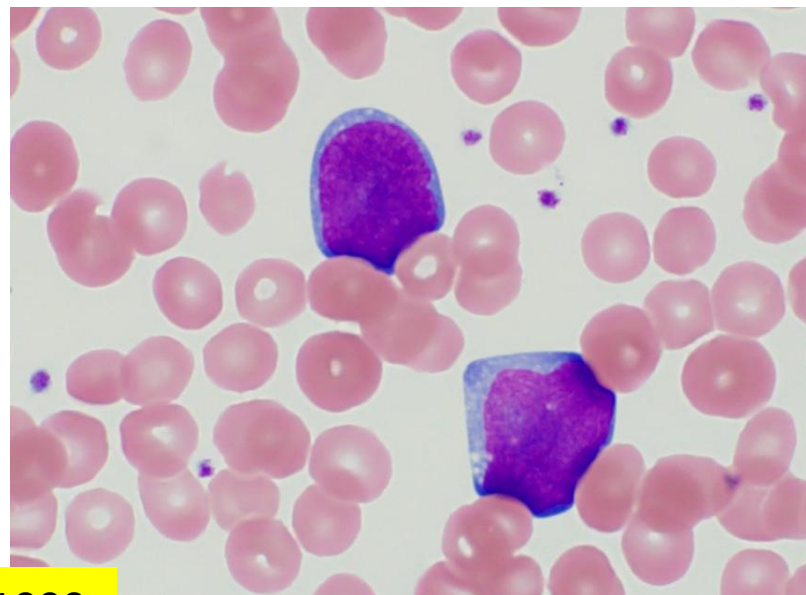
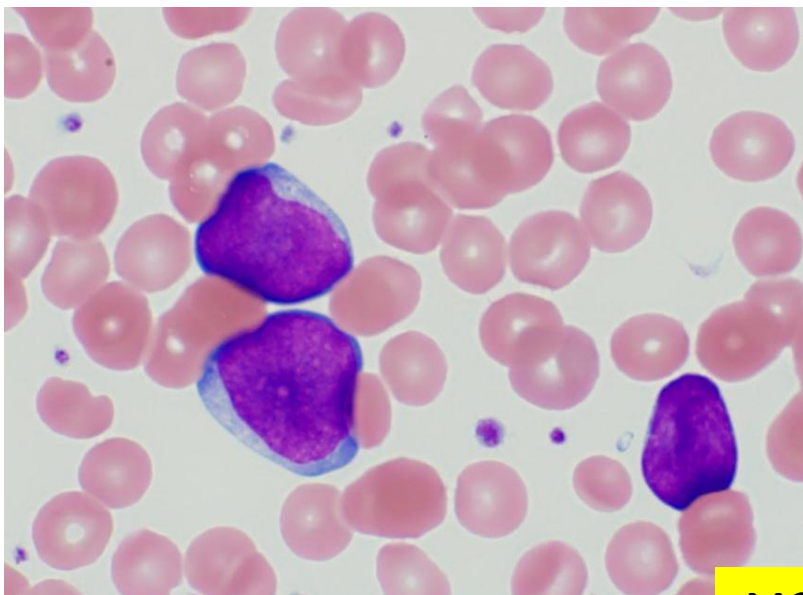
TP	6.9	g/dL	Na	142	mEq/L
T-Bil	0.5	mg/dL	K	3.8	mEq/L
AST	68	IU/L	Cl	107	mEq/L
ALT	20	IU/L	CRP	0.62	mg/dL
LD	1038	IU/L	IgG	1608	mg/dL
ALP	123	IU/L	IgA	258	mg/dL
BUN	7	mg/dL	IgM	123	mg/dL
Cre	0.70	mg/dL	フェリチン	499	ng/mL

# 末梢血液像

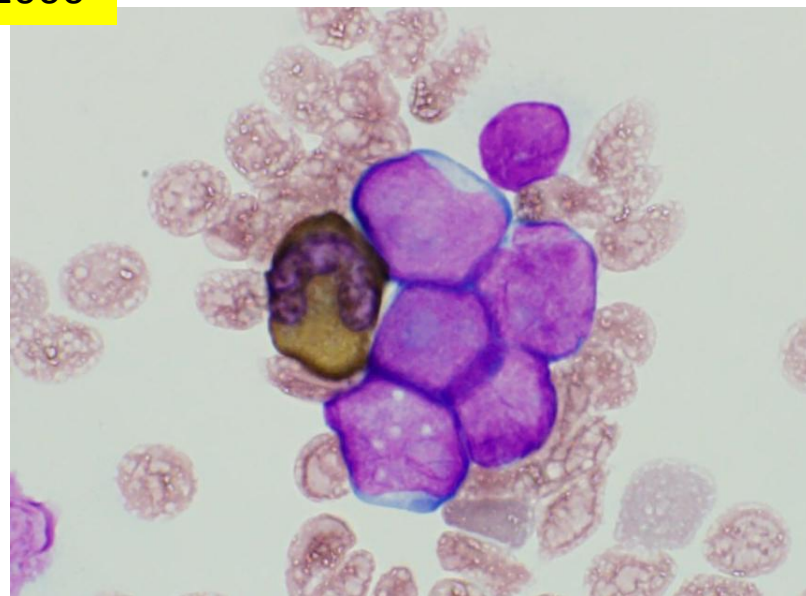
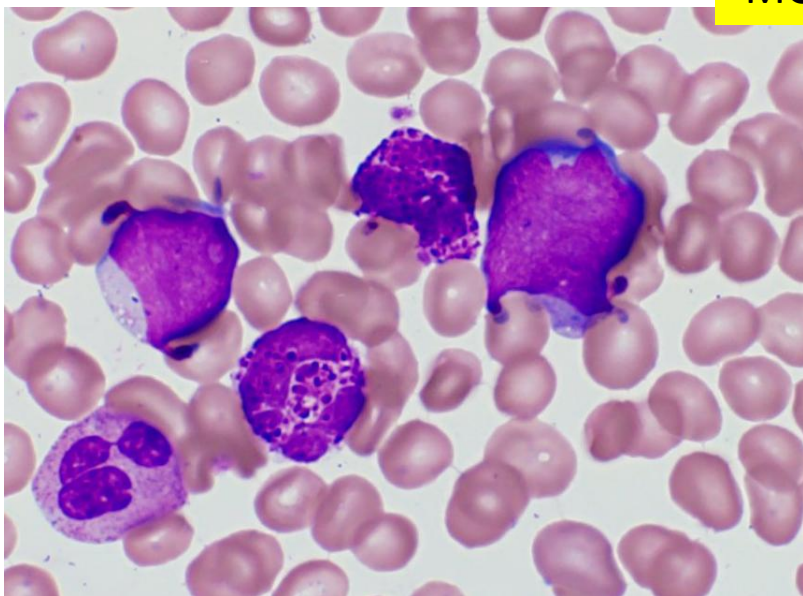


MG × 400

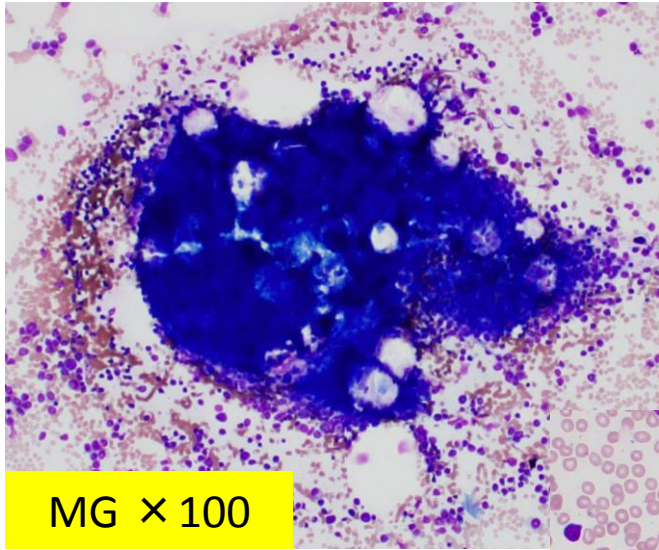
# 末梢血液像



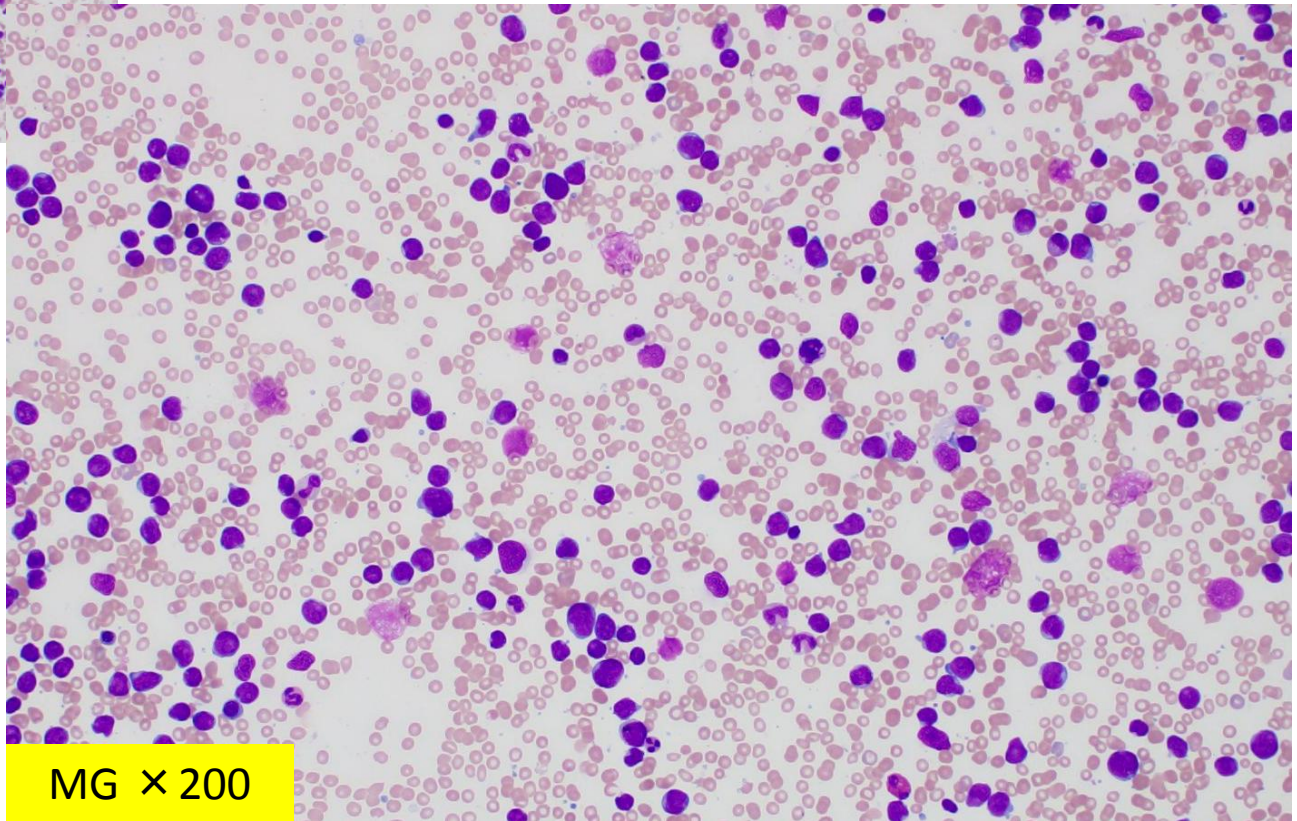
MG × 1000



# 骨髓像

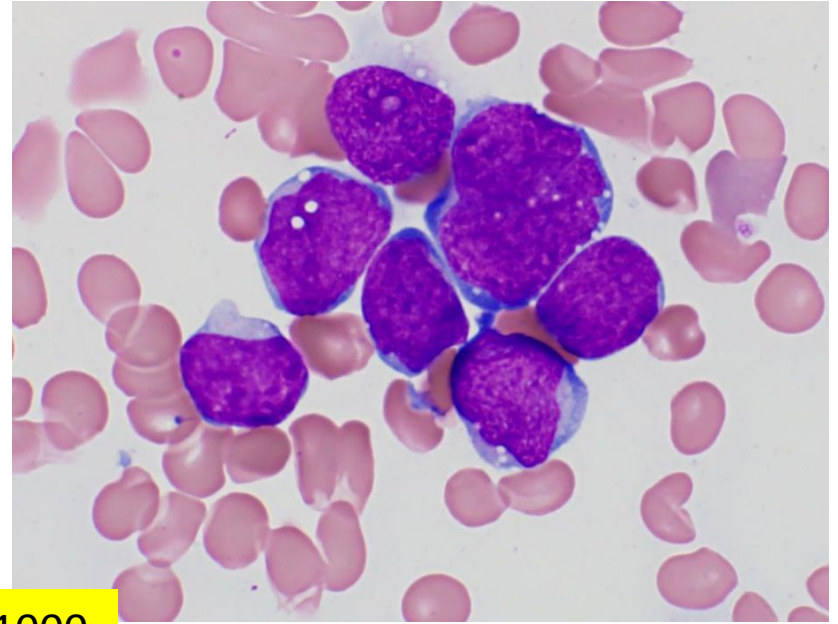
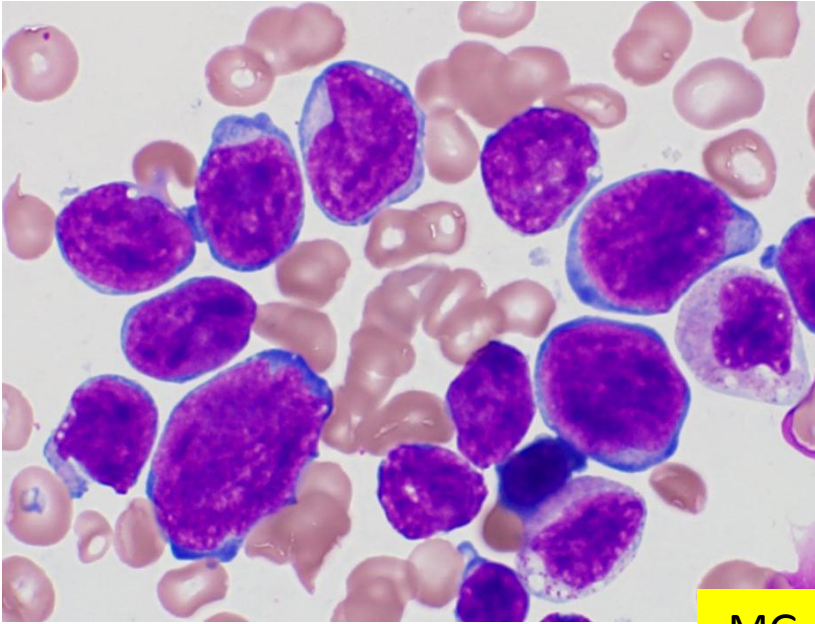


MG × 100

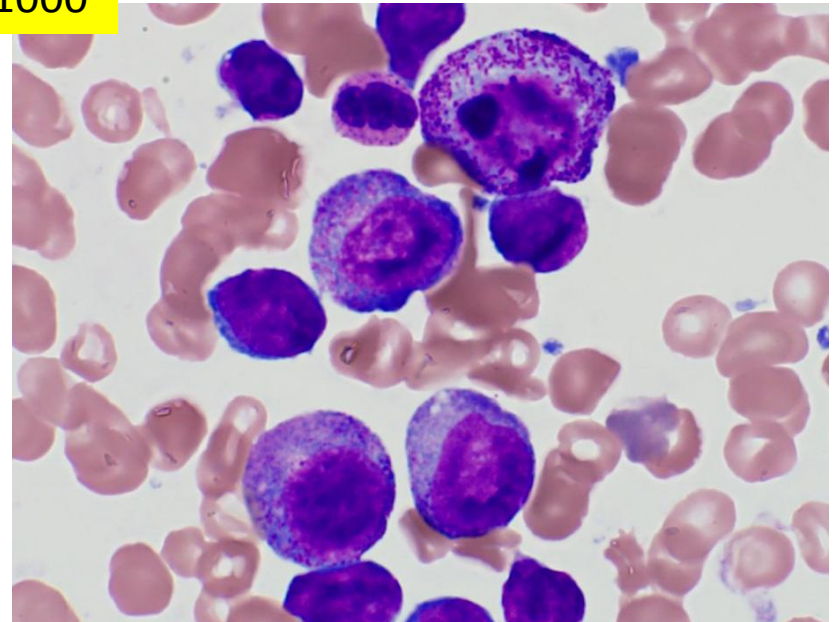
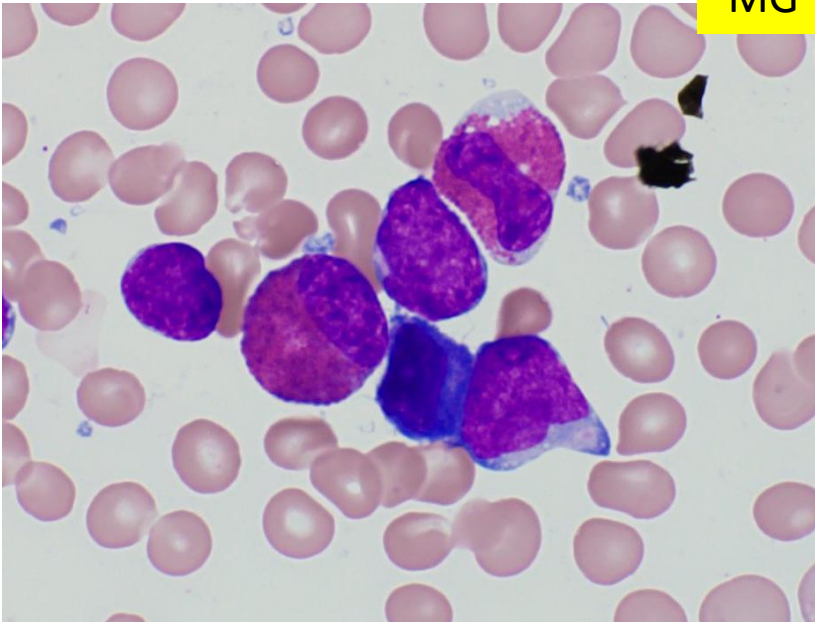


MG × 200

# 骨髓像



MG × 1000



# 骨髓像

